



MES COLLEGE ERUMELY

WASTE MANAGEMENT

Management of the various types of degradable and non-degradable waste

- **Solid waste management**
- **Liquid waste management**
- **E-waste management**

Waste means anything which is refused after primary use, or is worthless, defective and of no use. These are palpable pollutants and harmful for the entire environment. Aware of the consequences of pollution, the waste materials in the campus are classified on the basis of its nature and dealt with by systematic processing. The campus always follows the slogan "waste free campus and lives along". This policy of waste management helps to maintain environmental sustainability and get a chance to learn new lessons. Plastic and e-waste are the greatest threat to the contemporary era, so we have declared our campus as a plastic free campus and we collect plastic wastes from nearby villages and tourist places especially from Sabarimala pilgrim centre. The plastic waste thus collected is safely handed over to the panchayath centers for effective recycling. Through this programme students were aware not only about the waste management strategies but also about social responsibilities.

- Waste is segregated into biodegradable and non-biodegradable wastes, and as toxic and non-toxic wastes.
- Organic farming is done in the campus by the NSS volunteers to sensitise students on sustainable agricultural practices.
- Students and staff are encouraged to adopt organic modes of farming and gardening.

SOLID WASTE MANAGEMENT

Materials which can be converted into bio-manure are specially processed and put to productive use. Biodegradable materials are collected separately and disposed of in pits without harming the environment. Equipments and materials are put to maximum use through maintenance. The damaged equipments, beyond repair are disposed with care so that they won't be harmful for the nature. Adopt hundred percent of LED bulbs and avoid the use of Fluorescent bulbs. Plastic wastes from neighboring places are regularly collected and handed over to the panchayath especially in Sabarimala season time.



MINI INCINERATOR



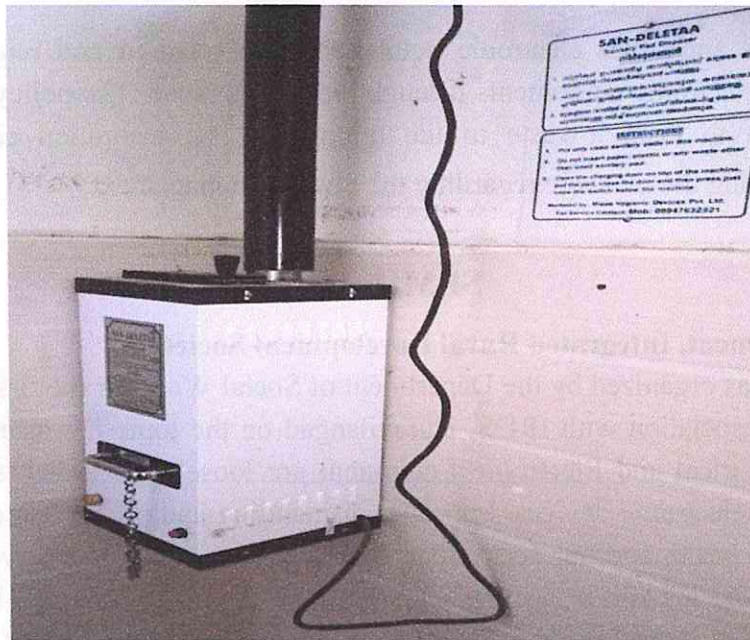
SEPARATE COLOUR CODED BOX



VERMICOMPOSTING

Vermicompost project is a running project of NSS unit, MES College Erumely in the campus to demonstrate and practice eco friendly waste management measures. A vermicompost tank established by the unit is working nearer to the ladies hostel. Degradable kitchen wastes from the college and hostel are used for composting. The technical direction and worms for the tank was collected from Malanadu Development Society, Parathodu. NSS Programme Officers, NSS Volunteers – Raza Habeeb, Binass, Asamsu, Althaf TK were directed to periodically monitor the growth and development of the project.

NAPKIN DESTROYER



NAPKIN VENDING MACHINE



LIQUID WASTE MANAGEMENT

Liquid waste is managed well with special care. Liquid waste is drained through proper sewers into covered pits. Rainwater harvesting is the simple process or technology used to conserve Rainwater by collecting, storing, conveying and purifying of Rainwater that runs off from roof tops, parks, roads, open grounds, etc. for later use. The NSS Unit of our college had conducted a rainwater harvesting programme in our college on 9th September 2021. NSS volunteers were actively involved in this programme. NSS volunteers constructed 2 Rain water harvesting pits near to the well in 2x 2x 2 measurement.

E-WASTE MANAGEMENT

Damaged computers and other electronic equipments are repaired and reused. Ensured the optimum use of all electronic equipments through repair and reuse .The policy of ' Use ,Repair and Reuse' ensures to keep e-waste to the minimum. The institution conducted various exhibitions highlighting the message regarding the e-waste management.

SEMINAR

E - Waste Management, Integrated Rural Development Society

A seminar session was organized by the Department of Social Work for the first year students of 2017- 19 batch in association with IRDS, Kuravilangad on the topic E waste management. E-waste or Waste Electrical and Electronic Equipment are loosely discarded, surplus, obsolete, broken, electrical or electronic devices. Improper dismantling and processing of e-waste render it perilous to human health and our ecosystem. The recycling of e-waste serves a lot of useful purposes. For instance, include protecting human and environmental health by keeping those devices out of landfills or recovering the parts within the devices that still have value, and providing manufacturers with recycled metals that can be used to make new products. Integrated rural development society initiates programs to help families who live below the poverty line to enhance their state of living and to empower the poor by helping them develop at every level. The program's objectives are met by providing productive assets and inputs to its target groups. The program was very successful as the students got the opportunity to study on E waste management and IRDS. The recycling of e-waste serves a lot of useful purposes. For instance, include protecting human and environmental health by keeping those devices out of landfills or recovering the parts within the devices that still have value, and providing manufacturers with recycled metals that can be used to make new products. The program's objectives are met by providing productive assets and inputs to its target groups.

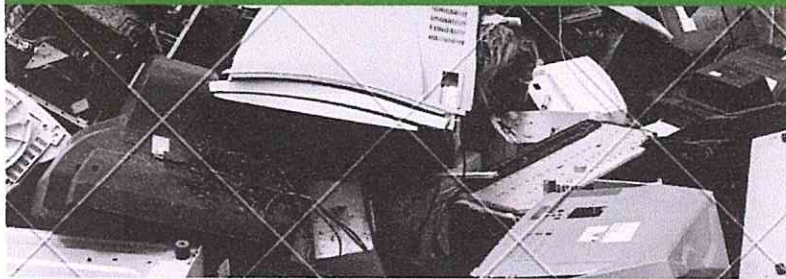


E -WASTE MANAGEMENT

organised by IRDS(Integrated Rural Development society)

Associated with Master of social work

MES COLLEGE ERUMELY



SEMINAR ON E- WASTE MANAGEMENT

STARTUP OPPORTUNITIES IN E-WASTE MANAGEMENT

 **M E S COLLEGE ERUMELY**
(Affiliated to Mahatma Gandhi University)
MES College P.O, Erumely, Kerala, South India
www.meserumelycollege.ac.in E-mail: principal@meserumelycollege.ac.in

Internal Quality Assurance Cell (IQAC) & Innovation and Entrepreneurship Development Cell (IEDC)
Proudly Presents
National Webinar on STARTUP OPPORTUNITIES IN E-WASTE MANAGEMENT

Date: 22 August 2020
Time: 3:00P.M-4:30P.M

Resource Person

 **Mr. S S Nagesh Kumar**
Assistant Manager
State Model Officer
E-waste Management
Clean Kerala Company Limited
LSQP
Govt. Of Kerala.

REGISTRATION
- Free Registration.
- E- Certificates will be issued
- Communications only through Whatsapp / Telegram

Co-ordinators:
Mrs.Rema Devi A (Vice Prindpal & Co-ordinator, IQAC)
Dr. Rajeswari R (Director, Innovation and Entrepreneurship Development Cell (IEDC))

<https://t.me/iesocut/191980491919113198> <https://chat.whatsapp.com/17262648632484919611>

 **SCAN FOR REGISTRATION**

 We are on      
Register Now
<https://forms.gle/mHgoKdrrmN6wttrcf7>




Prof. (Dr.) ANIL KUMAR S.
PRINCIPAL
MES COLLEGE ERUMELY