



# MES COLLEGE ERUMELY

## PROJECT REPORT



**B.Com Finance & Taxation**

# MES COLLEGE ERUMELY

(Affiliated to Mahatma Gandhi University, Kottayam)

MES COLLEGE P.O, ERUMELY, KOTTAYAM (Dist.) - 686509



## DEPARTMENT OF COMMERCE

### CERTIFICATE

This is to certify that this dissertation entitled "A STUDY ON INVESTMENT AND SAVINGS PATTERN AMONG THE WORKING WOMEN IN KANJIRAPPALLY TALUK" has been submitted by JINIL KURUVILLA (190021062391), MUHAMMED AZHAR (190021062394), RAFAEEK RASAK (190021062400), GOPIKA GOPAKUMAR (190021062422), JEREMY S VARGHESE (190021062423) in partial fulfilment of the requirements for the award of Bachelor of Commerce Degree (CBCS) by the Mahatma Gandhi University Kottayam during the academic year 2019-2022.

Mrs. AMEENA MEERAN, M.com

Project Guide

Assistant professor

Department of commerce

Branch: Finance and Taxation

MES College Erumely

Submitted for the viva voce on: 17/05/2023.....

Internal Examiner

Mrs. MAYAMOL P, M.com

Head of the Department of Commerce

Branch: Finance and Taxation

DEPARTMENT OF COMMERCE  
BRANCH: (FINANCE & TAXATION)

External Examiner



# M.E.S COLLEGE ERUMELY

(Approved by Govt. of Kerala & Affiliated to the Mahatma Gandhi University)

A Minority Institution Certified by National Minority Education Commission

MES/EC/15432/2022

29/04/2022

## CERTIFICATE

This is to certify that the Dissertation Work entitled "A Study on Investment and Savings Pattern Among the Working Women in Kanjirappally Taluk" is a bonafide record of original work done by Mr. Jinil Kuruvilla (Reg No.190021062391) during the academic year 2021-2022 in partial fulfillment of the requirements for the award of B.Com Degree in Finance and Taxation by the Mahatma Gandhi University.

  
Principal



PRINCIPAL  
M.E.S COLLEGE ERUMELY

MES College P.D., Erumely, Kottayam (Dist), Kerala State - 686 509

Ph: 04826 254393, 255444, Fax: 04828 255464

Email: [principal@meseromelycollege.ac.in](mailto:principal@meseromelycollege.ac.in), [www.meserumelycollege.ac.in](http://www.meserumelycollege.ac.in)

# M.E.S COLLEGE ERUMELY

(Approved by Govt. of Kerala & Affiliated to the Mahatma Gandhi University)

A Minority institution Certified by National Minority Education Commission

MES/EC/15433/2022

29/04/2022

## CERTIFICATE

This is to certify that the Dissertation Work entitled "A Study on Investment and Savings Pattern Among the Working Women in Kanjirappally Taluk" is a bonafide record of original work done by Mr. Muhammed Azhar (Reg No.190021062394) during the academic year 2021-2022 in partial fulfillment of the requirements for the award of B.Com Degree in Finance and Taxation by the Mahatma Gandhi University.

  
Principal



PRINCIPAL  
M.E.S COLLEGE ERUMELY

MES College P.D., Erumely, Kottayam (Dist), Kerala State - 586 509

Ph: 04826 254393, 255444, Fax: 04828 255464

Email: [principal@meserumelycollege.ac.in](mailto:principal@meserumelycollege.ac.in), [www.meserumelycollege.ac.in](http://www.meserumelycollege.ac.in)



# M.E.S COLLEGE ERUMELY

(Approved by Govt. of Kerala & Affiliated to the Mahatma Gandhi University)

**A Minority Institution Certified by National Minority Education Commission**

MES/EC/15430/2022

29/04/2022

## CERTIFICATE

This is to certify that the Dissertation Work entitled "A Study on Investment and Savings Pattern Among the Working Women in Kanjirappally Taluk" is a bonafide record of original work done by Mr. Rafeek Rasak (Reg No.190021062400) during the academic year 2021-2022 in partial fulfillment of the requirements for the award of B.Com Degree in Finance and Taxation by the Mahatma Gandhi University.



  
Principal  
M.E.S COLLEGE ERUMELY

MES College P.D., Erumely, Kottayam (Dist), Kerala State - 686 509

Ph: 04828 254398, 255444, Fax: 04828 255464

Email: [principal@meserumelycollege.ac.in](mailto:principal@meserumelycollege.ac.in), [www.meserumelycollege.ac.in](http://www.meserumelycollege.ac.in)



# M.E.S COLLEGE ERUMELY

(Approved by Govt. of Kerala & Affiliated to the Mahatma Gandhi University)

A Minority Institution Certified by National Minority Education Commission

MES/EC/15429/2022

29/04/2022

## CERTIFICATE

This is to certify that the Dissertation Work entitled "A Study on Investment and Savings Pattern Among the Working Women in Kanjirappally Taluk" is a bonafide record of original work done by Ms. Gopika Gopakumar (Reg No.190021062422) during the academic year 2021-2022 in partial fulfillment of the requirements for the award of B.Com Degree in Finance and Taxation by the Mahatma Gandhi University.

  
Principal

PRINCIPAL  
M.E.S COLLEGE ERUMELY



MES College P.O., Erumey, Kottayam (Dist), Kerala State - 686 509

Ph: 04828 254393, 255444, Fax: 04826 255454

Email: principal@meserumelycollege.ac.in, www.meserumelycollege.ac.in



# M.E.S COLLEGE ERUMELY

(Approved by Govt. of Kerala & Affiliated to the Mahatma Gandhi University)

A Minority Institution Certified by National Minority Education Commission

MES/EC/15431/2022

29/04/2022

## CERTIFICATE

This is to certify that the Dissertation Work entitled "A Study on Investment and Savings Pattern Among the Working Women in Kanjirappally Taluk" is a bonafide record of original work done by Mr. Jeremy S Varghese (Reg No.190021062423) during the academic year 2021-2022 in partial fulfillment of the requirements for the award of B.Com Degree in Finance and Taxation by the Mahatma Gandhi University.



  
Principal

PRINCIPAL  
M.E.S COLLEGE ERUMELY

MES College P.O., Erumely, Kuttayam (Dist), Kerala State - 686 509

Ph: 04828 254393, 255444, Fax: 04828 255464

Email: [principal@mesarumelycollege.ac.in](mailto:principal@mesarumelycollege.ac.in), [www.mesarumelycollege.ac.in](http://www.mesarumelycollege.ac.in)

# MES COLLEGE ERUMELY

(Affiliated to Mahatma Gandhi University, Kottayam)

MES COLLEGE P.O, ERUMELY, KOTTAYAM(DT)-686509



## DEPARTMENT OF COMMERCE CERTIFICATE

This is to certify that this dissertation entitled "A STUDY ON PART-TIME EMPLOYMENT AMONG YOUTH AND THEIR WORK-RELATED ATTITUDES AND ASPIRATIONS WITH SPECIAL REFERENCE TO KANJIRAPPALLY TALUK" has been submitted by AADHIL MUBARAK (190021062371) , AIDA ELIZABETH ZACHARIAH ( 190021062374) , AMINA SHIAS ( 190021062380) , ANSA SOMAN (190021062381), GODWIN K THOMAS ( 190021062390) in partial fulfilment of the requirements for the award of Bachelor Degree in Commerce (CBCS) by the Mahatma Gandhi University Kottayam during the academic year 2021-2022.

  
Mrs. MAYAMOL P, M. Com

Assistant Professor

Project Guide, Department of Commerce

Branch: Finance & Taxation

  
Mrs. MAYAMOL P, M. Com

Assistant Professor

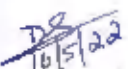
HOD of Commerce

Branch: Finance & Taxation

DEPARTMENT OF COMMERCE

BRANCH: (FINANCE & TAXATION)

Submitted for the Viva Voce on: 16-05-2022

  
Internal Examiner

  
External Examiner



MES/EC/15412/2022

29/04/2022

**CERTIFICATE**

This is to certify that the Dissertation Work entitled "A Study on Part-Time Employment Among Youth and their Work-Related Attitudes and Aspirations with Special Reference to Kanjirappatty Taluk" is a bonafide record of original work done by Mr. Aadbil Mubarak (Reg No. J90021062371) during the academic year 2021-2022 in partial fulfillment of the requirements for the award of B.Com Degree in Finance and Taxation by the Mahatma Gandhi University.

  
PrincipalPRINCIPAL  
M.E.S COLLEGE ERUMELY**MES College P.D., Erumely, Kottayam (Dist), Kerala State - 686 509****Ph: 04828 254393, 255444, Fax: 04828 255464****Email: principal@meserumelycollege.ac.in, www.mesarumelycollege.ac.in**

MES/EC/15413/2022

29/04/2022

**CERTIFICATE**

This is to certify that the Dissertation Work entitled "A Study on Part-Time Employment Among Youth and their Work-Related Attitudes and Aspirations with Special Reference to Kanjirappally Taluk" is a bonafide record of original work done by Ms. Aida Elizabeth Zachariah (Reg No.19002J062374) during the academic year 2021-2022 in partial fulfillment of the requirements for the award of B.Com Degree in Finance and Taxation by the Mahatma Gandhi University.



  
Principal  
PRINCIPAL  
M.E.S COLLEGE ERUMELY

**MES College P.O., Erumely, Kottayam (Dist), Kerala State - 686 509****Ph: 04828 254393, 255444, Fax: 04828 255464****Email: principal@meserumelycollege.ac.in, www.meserumelycollege.ac.in**

**CERTIFICATE**

This is to certify that the Dissertation Work entitled "A Study on Part-Time Employment Among Youth and their Work-Related Attitudes and Aspirations with Special Reference to Kanjirappally Taluk" is a bonafide record of original work done by Ms. Amina Sbias (Reg No.190021062380) during the academic year 2021-2022 in partial fulfillment of the requirements for the award of B.Com Degree in Finance and Taxation by the Mahatma Gandhi University.



  
Principal

PRINCIPAL  
M.E.S COLLEGE ERUMELY



# M.E.S COLLEGE ERUMELY

(Approved by Govt. of Kerala & Affiliated to the Mahatma Gandhi University)

**A Minority Institution Certified by National Minority Education Commission**

MES/EC/15414/2022

29/04/2022

## CERTIFICATE

This is to certify that the Dissertation Work entitled "A Study on Part-Time Employment Among Youth and their Work-Related Attitudes and Aspirations with Special Reference to Kanjirappally Taluk" is a bonafide record of original work done by Ms. Ansa Soman (Reg No.190021062381) during the academic year 2021-2022 in partial fulfillment of the requirements for the award of B.Com Degree in Finance and Taxation by the Mahatma Gandhi University.



  
Principal  
PRINCIPAL  
M.E.S COLLEGE ERUMELY

MES College P.O., Erumely, Kottayam (Dist), Kerala State - 586 509  
Ph: 04828 254393, 255444, Fax: 04828 255464  
Email: [principal@meserumelycollege.ac.in](mailto:principal@meserumelycollege.ac.in), [www.meserumelycollege.ac.in](http://www.meserumelycollege.ac.in)

## CERTIFICATE

This is to certify that the Dissertation Work entitled "A Study on Part-Time Employment Among Youth and their Work-Related Attitudes and Aspirations with Special Reference to Kanjirappally Taluk" is a bonafide record of original work done by Mr. Godwin K Thomas (Reg No.190021062390) during the academic year 2021-2022 in partial fulfillment of the requirements for the award of B.Com Degree in Finance and Taxation by the Mahatma Gandhi University.



  
Principal

PRINCIPAL  
M.E.S COLLEGE ERUMELY

MES College P.O., Erumely, Kottayam (Dist), Kerala State - 688 509

Ph: 04828 254393, 255444, Fax: 04828 255464

Email: principal@meserumelycollege.ac.in, www.meserumelycollege.ac.in

# MES COLLEGE ERUMELY

(Affiliated to Mahatma Gandhi University, Kottayam)

MES COLLEGE P.O, ERUMELY, KOTTAYAM(DT)-686509



## DEPARTMENT OF COMMERCE

### CERTIFICATE

This is to certify that this Dissertation work entitled "A STUDY ON JOB SATISFACTION OF TEACHERS OF PRIVATE SCHOOL EDUCATIONAL INSTITUTIONS WITH SPECIAL REFERENCE TO RANNY TALUK" has been submitted by FAZIL K SUBAIR (190021062386), GAYATHRI JAYARAJ (190021062388), GEETHU MOL (190021062389), ARPITHA SHAJI (190021062417), ASWIN KRISHNA (190021062420) in partial fulfillment of the requirement for the award of Bachelor Degree in Commerce (CBCS) by the Mahatma Gandhi University Kottayam during the academic year 2019-2022.

  
Mrs. JASEELA HANEEFA, M.com

Project Guide

Assistant professor

Department of commerce

Branch: Finance and Taxation

MES College Erumely

Submitted for the Viva Voce on 12/5/2022

  
Internal Examiner

  
Mrs. MAYAMOL P, M.com

Head of the Department of commerce

Branch: Finance and Taxation

HEAD  
DEPARTMENT  
BRANCH: (Finance and Taxation)

  
External Examiner

# M.E.S COLLEGE ERUMELY

(Approved by Govt. of Kerala & Affiliated to the Mahatma Gandhi University)

A Minority Institution Certified by National Minority Education Commission

SEC/TS418/2022

29/04/2022

## CERTIFICATE

This is to certify that the Dissertation Work entitled "A Study on Job Satisfaction of Teachers of Private School Educational Institutions with Special Reference to Raunyan Taluk" is a bonafide record of original work done by Mr. Aswin Krishna (Reg. No. 190021062420) during the academic year 2021-2022 in partial fulfillment of the requirements for the award of B.Com Degree in Commerce and Taxation by the Mahatma Gandhi University.

  
Principal

PRINCIPAL  
M.E.S COLLEGE ERUMELY



M.E.S College P.O., Erumely, Kottayam (Dist), Kerala State - 686 509

Ph: 94828 254393, 255444, Fax: 04828 255464

principal@maserumelycollege.ac.in, www.meserumelycollege.ac.in

# M.E.S COLLEGE ERUMELY

(Approved by Govt. of Kerala & Affiliated to the Mahatma Gandhi University)

A Minority Institution Certified by National Minority Education Commission

29/04/2022

29/04/2022

## CERTIFICATE

This is to certify that the Dissertation Work entitled "A Study on Job Satisfaction of Teachers of Private School Educational Institutions with Special Reference to Ranny Taluk" is a bonafide record of original work done by Mr. Fazil K Subair (Reg No.190021062386) during the academic year 2021-2022 in partial fulfillment of the requirements for the award of B.Com Degree in Finance and Taxation by the Mahatma Gandhi University.



  
Principal

PRINCIPAL  
M.E.S COLLEGE ERUMELY

MES College P.O., Erumely, Kottayam (Dist), Kerala State - 685 509

Ph: 94828 254393, 255444, Fax: 04828 255464

Email: [principal@meserumelycollege.ac.in](mailto:principal@meserumelycollege.ac.in), [www.meserumelycollege.ac.in](http://www.meserumelycollege.ac.in)



# M.E.S COLLEGE ERUMELY

(Approved by Govt. of Kerala & Affiliated to the Mahatma Gandhi University)

A Minority Institution Certified by National Minority Education Commission

MES/EC/15419/2022

29/04/2022

## CERTIFICATE

This is to certify that the Dissertation Work entitled "A Study on Job Satisfaction of Teachers of Private School Educational Institutions with Special Reference to Ranny Taluk" is a bonafide record of original work done by Ms. Geethu Moi (Reg No.190021062389) during the academic year 2021-2022 in partial fulfillment of the requirements for the award of B.Com Degree in Finance and Taxation by the Mahatma Gandhi University.



  
Principal

PRINCIPAL  
M.E.S COLLEGE ERUMELY

MES College P.O., Erumeli, Kottayam (Dist), Kerala State - 886 609

Ph: 04328 254393, 255444, Fax: 04828 255464

Email: [principal@meserumelycollege.ac.in](mailto:principal@meserumelycollege.ac.in), [www.meserumelycollege.ac.in](http://www.meserumelycollege.ac.in)



# M.E.S COLLEGE ERUMELY

(Approved by Govt. of Kerala & Affiliated to the Mahatma Gandhi University)

A Minority Institution Certified by National Minority Education Commission

MES/EC/15416/2022

29/04/2022

## CERTIFICATE

This is to certify that the Dissertation Work entitled "A Study on Job Satisfaction of Teachers of Private School Educational Institutions with Special Reference to Rannay Taluk" is a bonafide record of original work done by Ms. Gayathri Jayaraj (Reg No.190021062388) during the academic year 2021-2022 in partial fulfillment of the requirements for the award of B.Com Degree in Finance and Taxation by the Mahatma Gandhi University.



  
Principal

PRINCIPAL  
M.E.S COLLEGE ERUMELY

MES College P.O., Erumely, Kottayam (Dist), Kerala State - 688 509

Ph: 04828 254393, 255444, Fax: 04828 255484

Email: [principal@meserumelycollege.ac.in](mailto:principal@meserumelycollege.ac.in) [www.meserumelycollege.ac.in](http://www.meserumelycollege.ac.in)

# M.E.S COLLEGE ERUMELY

(Approved by Govt. of Kerala & Affiliated to the Mahatma Gandhi University)

A Minority Institution Certified by National Minority Education Commission

MES/EC/15417/2022

29/04/2022

## CERTIFICATE

This is to certify that the Dissertation Work entitled "A Study on Job Satisfaction of Teachers of Private School Educational Institutions with Special Reference to Ranny Taluk" is a bonafide record of original work done by Ms. Arpitha Shaji (Reg No.190021062417) during the academic year 2021-2022 in partial fulfillment of the requirements for the award of B.Com Degree in Finance and Taxation by the Mahatma Gandhi University.

  
Principal  
PRINCIPAL  
M.E.S COLLEGE ERUMELY



MES College P.O., Erumely, Kottayam (Dist), Kerala State - 686 509

Ph: 04828 254393, 255444, Fax: 04828 255464

Email: [principal@meserumelycollege.ac.in](mailto:principal@meserumelycollege.ac.in), [www.meserumeiycollege.ac.in](http://www.meserumeiycollege.ac.in)

# MES COLLEGE ERUMELY

(Affiliated to Mahatma Gandhi University, Kottayam)

MES COLLEGE P.O, ERUMELY, KOTTAYAM(DT) - 686509



## DEPARTMENT OF COMMERCE

### CERTIFICATE

This is to certify that this dissertation entitled "A STUDY ON PROBLEMS FACED BY YOUTH ENTREPRENEURS WITH SPECIAL REFERENCE TO KANJIRAPPALLY TALUK" has been submitted by SEBEEL SHAJAHAN (190021062403), SHAHABA KABEER (190021062429), SHAHANA AZEEZ (190021062430), SHAJEENA SHAJI (190021062405), SHIBIN C.S (190021062407) in partial fulfillment of the requirements for the award of Bachelor of Commerce Degree (CBCS) by the Mahatma Gandhi University Kottayam during the academic year 2021-2022

  
Mrs. DELLAMOL GEORGE, M.COM

Assistant Professor

Project Guide,

Department of Commerce

Branch: Finance & Taxation

MES College Erumely

  
Mrs. MAYAMOL P, M.COM

Assistant Professor

Head of the Department

DEPARTMENT OF COMMERCE  
Branch: Finance & Taxation

BRANCH: FINANCE & TAXATION

Submitted for the Viva Voce on: 17/03/2022.....

  
Internal Examiner

  
External Examiner



MES/EC/15444/2022

29/04/2022

## CERTIFICATE

This is to certify that the Dissertation Work entitled "**A Study on Problems Faced by Youth Entrepreneurs with Special Reference to Kanjirappally Taluk**" is a bonafide record of original work done by **Mr. Sebeel Shajahan (Reg No.190021062403)** during the academic year 2021-2022 in partial fulfilment of the requirements for the award of B.Com Degree in Finance and Taxation by the Mahatma Gandhi University.



  
Principal

PRINCIPAL  
M.E.S COLLEGE ERUMELY

MES College P.O., Erumely, Kottayam (Dist), Kerala State - 886 509

Ph: 04828 254393, 255444, Fax: 04828 255464

Email: [principal@meserumelycollege.ac.in](mailto:principal@meserumelycollege.ac.in), [www.meserumelycollege.ac.in](http://www.meserumelycollege.ac.in)

MES/EC/15445/2022

29/04/2022

## CERTIFICATE

This is to certify that the Dissertation Work entitled "A Study on Problems Faced by Youth Entrepreneurs with Special Reference to Kanjirappally Taluk" is a bonafide record of original work done by Ms. Shababa Kabeer (Reg No.190021062429) during the academic year 2021-2022 in partial fulfillment of the requirements for the award of B.Com Degree in Finance and Taxation by the Mahatma Gandhi University.



  
Principal

PRINCIPAL  
M.E.S COLLEGE ERUMELY

MES College P.O., Erumely, Kottayam (Dist), Kerala State - 685 509  
Ph: 04828 254393, 255444, Fax: 04828 255464  
Email: [principal@meserumelycollege.ac.in](mailto:principal@meserumelycollege.ac.in), [www.meserumelycollege.ac.in](http://www.meserumelycollege.ac.in)

MES/BC/15446/2022

29/04/2022

**CERTIFICATE**

This is to certify that the Dissertation Work entitled "A Study on Problems Faced by Youth Entrepreneurs with Special Reference to Kanjirappally Taluk" is a bonafide record of original work done by Ms. Shahana Azeez (Reg No.190021062430) during the academic year 2021-2022 in partial fulfillment of the requirements for the award of B.Com Degree in Finance and Taxation by the Mahatma Gandhi University.



Principal

PRINCIPAL

M.E.S COLLEGE ERUMELY

**MES College P.O., Erumely, Kettayam (Dist), Kerala State - 506 509****Ph: 04828 254393, 255444, Fax: 04820 255464****Email: principal@meserumelycollege.ac.in, www.meserumelycollege.ac.in**

MES/EC/15448/2022

29/04/2022

**CERTIFICATE**

This is to certify that the Dissertation Work entitled "A Study on Problems Faced by Youth Entrepreneurs with Special Reference to Kanjirappally Talok" is a bonafide record of original work done by Ms. Shajcena Sbaji (Reg No.190021062405) during the academic year 2021-2022 in partial fulfillment of the requirements for the award of B.Com Degree in Finance and Taxation by the Mahatma Gandhi University.

  
PrincipalPRINCIPAL  
M.E.S COLLEGE ERUMELY**MES College P.O., Erumety, Kottayam (Dist), Kerala State - 585 509****Ph: 04828 254393, 255444, Fax: 04828 255464****Email: principat@meserumelycollege.ac.in, www.meseromelycollege.ac.in**





# M.E.S COLLEGE ERUMELY

(Approved by Govt. of Kerala & Affiliated to the Mahatma Gandhi University)

A Minority Institution Certified by National Minority Education Commission

MES/EC/15447/2022

29/04/2022

## CERTIFICATE

This is to certify that the Dissertation Work entitled "A Study on Problems Faced by Youth Entrepreneurs with Special Reference to Kanjirappally Taluk" is a bonafide record of original work done by Mr. Sbibin C.S (Reg No.190021062407) during the academic year 2021-2022 in partial fulfillment of the requirements for the award of B.Com Degree in Finance and Taxation by the Mahatma Gandhi University.



  
Principal  
PRINCIPAL  
M.E.S COLLEGE ERUMELY

MES College P.O., Erumely, Kottayam (Dist), Kerala State - 685 509

Ph: 04828 254393, 255444, Fax: 04828 255454

Email: [principal@meserumelycollege.ac.in](mailto:principal@meserumelycollege.ac.in), [www.meserumelycollege.ac.in](http://www.meserumelycollege.ac.in)

# MES COLLEGE ERUMELY

(Affiliated to Mahatma Gandhi University, Kottayam)

MES COLLEGE P.O, ERUMELY, KOTTAYAM (DT)-686509



## DEPARTMENT OF FINANCE AND TAXATION CERTIFICATE

This is to certify that this dissertation entitled "A STUDY ON THE IMPACT OF COVID-19 ON DIGITAL PAYMENT IN KANJIRAPPALLY TALUK" has been submitted by THASNEEM RASHEED(190021062432), THASNI FATHIMA N.S(190021062433) SUBUHANA P.B (190021062410), VEENA VENU (190021062412 ), THERESA VARGHESE (190021062411) in partial fulfillment of the requirement for the award of B.Com Degree (CBCS) by the Mahatma Gandhi University Kottayam during the academic year 2021-2022.

  
Mrs. DELLAMOL GEORGE

Assistant professor

Project guide, Department of Commerce

Branch: Finance and taxation

  
Mrs. MAYAMOL P


Assistant professor

MAYAMOL P  
HEAD OF THE DEPARTMENT  
DEPARTMENT OF  
BRANCH: FINANCE & TAXATION

Branch: Finance and Taxation

BRANCH: FINANCE & TAXATION

Submitted for the Viva Voce on: 17-05-2022

  
17-05-22  
Internal Examiner

  
External Examiner

# M.E.S COLLEGE ERUMELY

(Approved by Govt. of Kerala & Affiliated to the Mahatma Gandhi University)

A Minority institution Certified by National Minority Education Commission

MES/EC/15455/2022

29/04/2022

## CERTIFICATE

This is to certify that the Dissertation Work entitled "A Study on the Impact of Covid-19 on Digital Payment with Special Reference to Kanjirappally Taluk" is a bonafide record of original work done by **Ms. Thasneem Rasheed (Reg No.190021062432)** during the academic year 2021-2022 in partial fulfillment of the requirements for the award of B.Com Degree in Finance and Taxation by the Mahatma Gandhi University.

  
Principal



MES College P.O., Erumely, Kottayam (Dist), Karala State - 886 509  
Ph: 04828 254393, 255444, Fax: 04828 255464  
Email: [principal@meserumelycollege.ac.in](mailto:principal@meserumelycollege.ac.in), [www.meserumelycollege.ac.in](http://www.meserumelycollege.ac.in)



# M.E.S COLLEGE ERUMELY

(Approved by Govt. of Kerala & Affiliated to the Mahatma Gandhi University)

A Mincrity Institution Certified by National Minority Education Commission

MES/EC/15456/2022

29/04/2022

## CERTIFICATE

This is to certify that the Dissertation Work entitled "A Study on the Impact of Covid-19 on Digital Payment with Special Reference to Kanjirappally Taluk" is a bonafide record of original work done by Ms. Thasni Fathima N.S (Reg No.190021062433) during the academic year 2021-2022 in partial fulfillment of the requirements for the award of B.Com Degree in Finance and Taxation by the Mahatma Gandhi University.

  
Principal



MES College P.C., Erumely, Kottayam (Dist), Kerala State - 586 509  
Ph: 04828 254393, 255444, Fax: 04828 255464  
Email: [principal@meserumelycollege.ac.in](mailto:principal@meserumelycollege.ac.in), [www.meserumelycollege.ac.in](http://www.meserumelycollege.ac.in)

# M.E.S COLLEGE ERUMELY

(Approved by Govt. of Kerala & Affiliated to the Mahatma Gandhi University)

A Minority Institution Certified by National Minority Education Commission

MES/EC/15457/2022

29/04/2022

## CERTIFICATE

This is to certify that the Dissertation Work entitled "A Study on the Impact of Covid-19 on Digital Payment with Special Reference to Kanjirappally Taluk" is a bonafide record of original work done by Ms. Theresa Varghese (Reg No. 190021062411) during the academic year 2021-2022 in partial fulfillment of the requirements for the award of B.Com Degree in Finance and Taxation by the Mahatma Gandhi University.

  
Principal



MES College P.O., Erumely, Kottayam (Dist), Kerala State - 686 509  
Ph: 04828 254393, 255444, Fax: 04828 255454  
Email: principal@meserumelycollege.ac.in, www.meserumelycollege.ac.in

# M.E.S COLLEGE ERUMELY

(Approved by Govt. of Kerala & Affiliated to the Mahatma Gandhi University)

A Minority Institution Certified by National Minority Education Commission

NES/EC/15454/2022

29/04/2022

## CERTIFICATE

This is to certify that the Dissertation Work entitled "A Study on the Impact of Covid-19 on Digital Payment with Special Reference to Kanjirappally Taluk" is a bonafide record of original work done by Ms. Subuhana P.B (Reg No.190021062410) during the academic year 2021-2022 in partial fulfillment of the requirements for the award of B.Com Degree in Finance and Taxation by the Mahatma Gandhi University.



  
Principal

MES College P.C., Erumely, Kottayam (Olst), Kerala State - 688 509  
Ph: 04828 254393, 255444, Fax: 04828 255464  
Email: principal@meserumelycollege.ac.in, www.meserumelycollege.ac.in

# M.E.S COLLEGE ERUMELY

(Approved by Govt. of Kerala & Affiliated to the Mahatma Gandhi University)

A Minority Institution Certified by National Minority Education Commission

MES/BO/1458/2021

29/04/2022

## CERTIFICATE

This is to certify that the Dissertation Work entitled "A Study on the Impact of Covid-19 on Digital Payment with Special Reference to Kanjirappally Taluk" is a bonafide record of original work done by Ms. Veena Venu (Reg No.190021062412) during the academic year 2021-2022 in partial fulfillment of the requirements for the award of B.Com Degree in Finance and Taxation by the Mahatma Gandhi University.

  
Principal



MES College P.O., Erumely, Kottayam (Dist), Kerala State - 685 509

Ph: 04628 254393, 255444, Fax: 04828 255454

Email: [principal@meserumelycollege.ac.in](mailto:principal@meserumelycollege.ac.in), [www.meserumelycollege.ac.in](http://www.meserumelycollege.ac.in)

# MES COLLEGE ERUMELY

(Affiliated to Mahatma Gandhi University)

PROPOSE P.O. ERUMELY, KOTTAYAM (DIST), KERALA 686509



## DEPARTMENT OF COMMERCE CERTIFICATE

This is to certify that the project work entitled "A STUDY ON THE PREFERENTIAL ATTITUDE OF CUSTOMERS TOWARDS HIMALAYA PRODUCTS WITH SPECIAL REFERENCE TO RANNY TALUK " has been submitted by ARYA PRASAD (190021062418) ASHIMA NAJEEB (190021062419) BISMI RASHEED (190021062421) ASWANI R NAIR (190021062384) in partial fulfilment of requirements for the award of Bachelor of commerce Degree (CBCSS) by the Mahatma Gandhi University Kottayam during the Academic year 2019-2022.

*See*  
**Mrs. JASEELA HANEEFA**

Assistant professor

Project Guide, Department of commerce

Branch : Finance & Taxation

Submitted for the viva voice o.....17/5/2022.....

*[Signature]*  
Internal Examiner

*[Signature]*  
External Examinee

*[Signature]*  
**Mrs. MAYAMOL P**

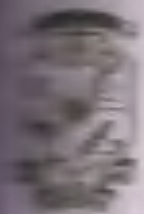
Assistant professor

Head of the Department

Branch: Finance & Taxation

*[Stamp]*  
MAYAMOL P  
HEAD OF THE DEPARTMENT  
DEPARTMENT OF COMMERCE  
BRANCH OF FINANCE & TAXATION





# M.E.S COLLEGE ERUMELY

(Approved by Govt. of Kerala & Affiliated to the Mahatma Gandhi University)

A Minority Institution Certified by National Minority Education Commission

MES/EC/15425/2022

29/04/2022

## CERTIFICATE

This is to certify that the Dissertation Work entitled "A Study  
■ Preferential Attitude of Customers towards Himalaya Products  
with Special Reference to Ranny Talok" is a bonafide record of  
original work done by Ms. Arya Prasad (Reg No.190021062418)  
during the academic year 2021-2022 in partial fulfillment of the  
requirements for the award of B.Com Degree in Finance and Taxation  
by the Mahatma Gandhi University.

  
Principal

PRINCIPAL  
M.E.S COLLEGE ERUMELY



MES College P.D., Erumety, Kottayam (Dist), Kerala State - 686 509

Ph: 04828 254393, 255444, Fax: 04828 255464

Email: principal@meserumelycollege.co.in www.meserumelycollege.co.in



# M.E.S COLLEGE ERUMELY

(Approved by Govt. of Kerala & Affiliated to the Mahatma Gandhi University)

A Minority Institution Certified by National Minority Education Commission

ES/EC/15426/2022

29/04/2022

## CERTIFICATE

This is to certify that the Dissertation Work entitled "A Study  
■ Preferential Attitude of Customers towards Himalaya Products  
with Special Reference to Ranny Taluk" is a bonafide record of  
original work done by Ms. Ashima Najeeb (Reg No.190021062419)  
during the academic year 2021-2022 in partial fulfillment of the  
requirements for the award of B.Com Degree in Finance and Taxation  
by the Mahatma Gandhi University.

*Ashima*  
Principal *15/2022*  
PRINCIPAL  
M.E.S COLLEGE ERUMELY





# M.E.S COLLEGE ERUMELY

(Approved by Govt. of Kerala & Affiliated to the Mahatma Gandhi University)

A Minority Institution Certified by National Minority Education Commission

MES/EC/15427/2022

29/04/2022

## CERTIFICATE

This is to certify that the Dissertation Work entitled "A Study on Preferential Attitude of Customers towards Himalaya Products with Special Reference to Ranny Tatak" is a bonafide record of original work done by Ms. Bismi Rasheed (Reg No.190021062421) during the academic year 2021-2022 in partial fulfilment of the requirements for the award of B.Com Degree in Finance and Taxation by the Mahatma Gandhi University.

  
13/5/2022  
Principal

PRINCIPAL  
M.E.S COLLEGE ERUMELY



MES College P.O., Erumely, Kottayam (Dist), Kerala State - 686 509

Ph: 04828 254393, 255444, Fax: 04828 255464

Email: principal@meserumelycollege.ac.in www.meserumelycollege.ac.in

# M.E.S COLLEGE ERUMELY

(Approved by Govt. of Kerala & Affiliated to the Mahatma Gandhi University)

A Minority Institution Certified by National Minority Education Commission

MES/EC/15428/2022

29/04/2022

## CERTIFICATE

This is to certify that the Dissertation Work entitled "A Study on Preferential Attitude of Customers towards Himalaya Products with Special Reference to Ranny Taluk" is a bonafide record of original work done by Ms. Aswani R Nair (Reg No.190021062384) during the academic year 2021-2022 in partial fulfillment of the requirements for the award of B.Com Degree in Finance and Taxation by the Mahatma Gandhi University.

  
Principal

PRINCIPAL  
M.E.S COLLEGE ERUMELY



MES College P.O., Erumely, Kottayam (Dist), Kerala State - 686 509

Ph: 04828 254393, 255444, Fax: 04828 255464

Email: [principal@meserumelycollege.ac.in](mailto:principal@meserumelycollege.ac.in), [www.meserumelycollege.ac.in](http://www.meserumelycollege.ac.in)

# MES COLLEGE ERUMELY

(Affiliated to Mahatma Gandhi University, Kottayam)

MES COLLEGE P.O. ERUMELY, KOTTAYAM (Dist.) - 686509



## DEPARTMENT OF COMMERCE CERTIFICATE

This is to certify that this Project Report entitled "A STUDY ON MOBILE BANKING AND ITS IMPACT ON CUSTOMER'S BANKING TRANSACTIONS WITH SPECIAL REFERENCE TO RANNI TALUK" has been submitted by ABHIRAMI T JAYAN (190021062372), AJEESHA VARGHESE (190021062376), ALFINA AZEEZ (190021062415), AHAMMAD KHAN (190021062373), AMAL SHAJI (190021062378) in partial fulfillment of the requirements for the award of Bachelor of Commerce Degree (CBCS) by the Mahatma Gandhi University Kottayam during the academic year 2019-2022

  
Mrs. MAYAMOL P, M.Com

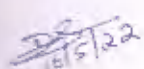
Assistant Professor  
Project Guide,  
Department of Commerce  
Branch: Finance & Taxation  
MES College Erumely

  
Mrs. MAYAMOL P, M.Com

Assistant Professor  
Head of the Department

HEAD OF THE DEPARTMENT  
DEPARTMENT OF COMMERCE  
BRANCH: (FINANCE & TAXATION)

Submitted for the Viva Voce on: 16/05/2022

  
Internal Examiner

  
External Examiner

# M.E.S COLLEGE ERUMELY

(Approved by Govt. of Kerala & Affiliated to the Mahatma Gandhi University)

A Minority Institution Certified by National Mincrity Education Commission

MES/EC/15404/2022

29/04/2022

## CERTIFICATE

This is to certify that the Dissertation Work entitled "A Study on Mobile Banking and its Impact on Customer's Banking Transactions with Special Reference to Ranny Taluk" is a bonafide record of original work done by Ms. Abhirami T Jayan (Reg No.190021062372) during the academic year 2021-2022 in partial fulfillment of the requirements for the award of B.Com Degree in Finance and Taxation by the Mahatma Gandhi University.

  
Principal

PRINCIPAL  
M.E.S COLLEGE ERUMELY



MES College P.D., Erumely, Kottayam (Dist), Kerala State - 586 509

Ph: 04828 254393, 255444, Fax: 04828 255464

Email: [principal@meserumelycollege.ac.in](mailto:principal@meserumelycollege.ac.in), [www.meserumelycollege.ac.in](http://www.meserumelycollege.ac.in)

# M.E.S COLLEGE ERUMELY

(Approved by Govt. of Kerala & Affiliated to the Mahatma Gandhi University)

A Minority Institution Certified by National Minority Education Commission

MES/EC/15406/2022

29/04/2022

## CERTIFICATE

This is to certify that the Dissertation Work entitled "A Study on Mobile Banking and its Impact on Customer's Banking Transactions with Special Reference to Ranny Taluk" is a bonafide record of original work done by Ms. Ajcesha Varghese (Reg No.190021062376) during the academic year 2021-2022 in partial fulfillment of the requirements for the award of B.Com Degree in Finance and Taxation by the Mahatma Gandhi University.

  
Principal

PRINCIPAL  
M.E.S COLLEGE ERUMELY



MES College P.O., Erumely, Kettayam (Dist), Kerala State - 8S8 509

Ph: 04828 254393, 255444, Fax: 04828 255454

Email: [principal@meseromelycollege.ac.in](mailto:principal@meseromelycollege.ac.in), [www.meseromelycollege.ac.in](http://www.meseromelycollege.ac.in)

MEMED/15403/2022

29/04/2022

## CERTIFICATE

This is to certify that the Dissertation Work entitled "A Study on Mobile Banking and its Impact on Customer's Banking Transactions with Special Reference to Ranny Taink" is a bonafide record of original work done by Ms. Affina Azeez (Reg No.190021062415) during the academic year 2021-2022 in partial fulfillment of the requirements for the award of B.Com Degree in Finance and Taxation by the Mahatma Gandhi University.

  
Principal

PRINCIPAL  
M.E.S COLLEGE ERUMELY





# M.E.S COLLEGE EROMELY

(Approved by Govt. of Kerala & Affiliated to the Mahatma Gandhi University)

A Minority Institution Certified by National Minority Education Commission

MES/EC/15405/2022

29/04/2022

## CERTIFICATE

This is to certify that the Dissertation Work entitled "A Study on Mobile Banking and its Impact on Customer's Banking Transactions with Special Reference to Rannay Taluk" is a bonafide record of original work done by Mr. Ahammad Khan (Reg No.190021062373) during the academic year 2021-2022 in partial fulfillment of the requirements for the award of B.Com Degree in Finance and Taxation by the Mahatma Gandhi University.

  
Principal



M.E.S. COLLEGE EROMELY

MES Collego P.O., Eromely, Knttayam (Dist), Kerala State - 506 589

Ph: 04828 254393, 255444, Fax: 04828 255454

Email: principal@meseromelycollege.ac.in, www.mesermelycollege.ac.in

# M.E.S COLLEGE ERUMELY

(Approved by Govt. of Kerala & Affiliated to the Mahatma Gandhi University)

A Minority Institution Certified by National Minority Education Commission

MES/EC/15402/2022

29/04/2022

## CERTIFICATE

This is to certify that the Dissertation Work entitled "A Study on Mobile Banking and its Impact on Customer's Banking Transactions with Special Reference to Ranny Taluk" is a bonafide record of original work done by Mr. Amal Shaji (Reg No.190021062378) during the academic year 2021-2022 in partial fulfillment of the requirements for the award of B.Com Degree in Finance and Taxation by the Mahatma Gandhi University.

  
Principal

PRINCIPAL  
M.E.S COLLEGE ERUMELY



MES College P.O., Erumely, Kottayam (Dist), Kerala State - 608 509  
Ph: 84828 254393, 255444, Fax: 04828 255464  
Email: [principal@meserumelycollege.ac.in](mailto:principal@meserumelycollege.ac.in), [www.meserumelycollege.ac.in](http://www.meserumelycollege.ac.in)

# MES COLLEGE ERUMELY


(Affiliated to Mahatma Gandhi University, Kottayam)

MES COLLEGE P.O ERUMELY, KOTTAYAM(DT)-686509



## DEPARTMENT OF COMMERCE CERTIFICATE

This is to certify that this dissertation entitled "A STUDY ON THE IMPACT OF ADVERTISEMENT ON THE PURCHASE OF HERBAL COSMETIC PRODUCTS WITH SPECIAL REFERENCE TO COLLEGE STUDENTS IN KANJIRAPPALLY TALUK" has been submitted by JUDIT GEORGE (190021062396), MUHAMMEDU YASEEN (190021062396), RITHU S SUNDHAR (190021062424), JYOTHI JAYAKUMAR (190021062424), SAFNA P MAHEEN (190021062426) in partial fulfillment of the requirements for the award of Bachelor of Commerce Degree (CBCS) by the Mahatma Gandhi University Kottayam during the academic year 2019-2022

  
Mrs. AMEENA MEERAN, M.Com

Project Guide

Assistant Professor, Department of Commerce

(Branch: Finance & Taxation)

MES College Erumely

  
Mrs. MAYAMOL P, M.Com


Head of The Department of Commerce

(Branch: Finance & Taxation)

HEAD OF THE DEPARTMENT  
DEPARTMENT OF COMMERCE  
BRANCH: (FINANCE & TAXATION)

Submitted for the Viva Voce on: ..17/05/2022....

  
Internal Examiner

  
External Examiner

# M.E.S COLLEGE ERUMELY

(Approved by Govt. of Kerala & Affiliated to the Mahatma Gandhi University)

A Minority Institution Certified by National Minority Education Commission

MES/EC/15439/2022

29/04/2022

## CERTIFICATE

This is to certify that the Dissertation Work entitled "A Study on the Impact of Advertisement on the Purchase of Herbal Cosmetic Products with Special Reference to College Students in Kanjirappally Taluk" is a bonafide record of original work done by Mr. Judit George (Reg No.190021062392) during the academic year 2021-2022 in partial fulfillment of the requirements for the award of B.Com Degree in Finance and Taxation by the Mahatma Gandhi University.



  
Principal

M.E.S COLLEGE ERUMELY

MES College P.O., Erumely, Kottayam (Dist), Kerala State - 686 509

Ph: 04828 254393, 255444, Fax: 04828 255464

Email: [principal@meserumelycollege.ac.in](mailto:principal@meserumelycollege.ac.in), [www.meserumelycollege.ac.in](http://www.meserumelycollege.ac.in)

# M.E.S COLLEGE ERUMELY

(Approved by Govt. of Kerala & Affiliated to the Mahatma Gandhi University)

A Minority Institution Certified by National Minority Education Commission

MES/EC/15440/2022

29/04/2022

## CERTIFICATE

This is to certify that the Dissertation Work entitled "A Study on the Impact of Advertisement on the Purchase of Herbal Cosmetic Products with Special Reference to College Students in Kanjirappally Taluk" is a bonafide record of original work done by Mr. Muhammedu Yaseen (Reg No.190021062396) during the academic year 2021-2022 in partial fulfillment of the requirements for the award of B.Com Degree in Finance and Taxation by the Mahatma Gandhi University.



*Ades*  
Principal

PRINCIPAL  
M.E.S COLLEGE ERUMELY

MES College P.O., Erumely, Kottayam (Dist), Kerala State - 686 509

Ph: 04828 254393, 255444, Fax: 04828 255464

Email: principal@meserumelycollege.ac.in, www.meserumelycollege.ac.in

# M.E.S COLLEGE ERUMELY

(Approved by Govt. of Kerala & Affiliated to the Mahatma Gandhi University)

A Minority Institution Certified by National Minority Education Commission

3448/2022

29/04/2022

## CERTIFICATE

This is to certify that the Dissertation Work entitled "A Study on the Impact of Advertisement on the Purchase of Herbal Cosmetic Products with Special Reference to College Students in Kottayam Taluk" is a bonafide record of original work done by Mr. Rishi S Sundar (Reg No.190021062401) during the academic year 2021-2022 in partial fulfillment of the requirements for the award of **B.Com Degree** in Finance and Taxation by the Mahatma Gandhi University.



Principal

PRINCIPAL  
M.E.S COLLEGE ERUMELY

MES College P.D., Erumely, Kottayam (Dist), Kerala State - 686 509

Ph: 04828 254393, 255444, Fax: 04828 255464

Email: principal@meserumelycollege.ac.in, www.meserumelycollege.ac.in

# M.E.S COLLEGE ERUMELY

(Approved by Govt. of Kerala & Affiliated to the Mahatma Gandhi University)

A Minority Institution Certified by National Minority Education Commission

SEC/15443/2022

29/04/2022

## CERTIFICATE

This is to certify that the Dissertation Work entitled "A Study on the Impact of Advertisement on the Purchase of Herbal Cosmetic Products with Special Reference to College Students in Kanjirappally Taluk" is a bonafide record of original work done by Ms. Jyothi Jayakumar (Reg No.190021062424) during the academic year 2021-2022 in partial fulfillment of the requirements for the award of B.Com Degree in Finance and Taxation by the Mahatma Gandhi University.



  
Principal

PRINCIPAL  
M.E.S COLLEGE ERUMELY

MES College P.O., Erumely, Kottayam (Dist), Kerala State - 686 509

Ph: 04828 254393, 255444, Fax: 04828 255464

Email: principal@meserumelycollege.ac.in, www.meserumelycollege.ac.in



# M.E.S COLLEGE ERUMELY

(Approved by Govt. of Kerala & Affiliated to the Mahatma Gandhi University)

A Minority Institution Certified by National Minority Education Commission

MES/EC/15442/2022

29/04/2022

## CERTIFICATE

This is to certify that the Dissertation Work entitled "A Study on the Impact of Advertisement on the Purchase of Herbal Cosmetic Products with Special Reference to College Students in Kanjirappally Taluk" is a bonafide record of original work done by Ms. Safna P Mabeen (Reg No.190021062426) during the academic year 2021-2022 in partial fulfillment of the requirements for the award of B.Com Degree in Finance and Taxation by the Mahatma Gandhi University.

  
Principal

MES COLLEGE ERUMELY

MES College P.O., Erumely, -Kottayam (Dist), Kerala State - 686 589

Ph: 04828 254393, 255444, Fax: 04828 255464

Email: principal@meserumelycollege.ac.in, www.meserumelycollege.ac.in